



UTP/DMI 2701 S. Coliseum Blvd., Suite 1256, Fort Wayne,
IN. 46803 (219)426-5212

PART# 47073090 MOUNTING KIT
BRACKET INSTALLATION
2001 CHEVY 2500 HD (HEAVY DUTY) SHORT BED

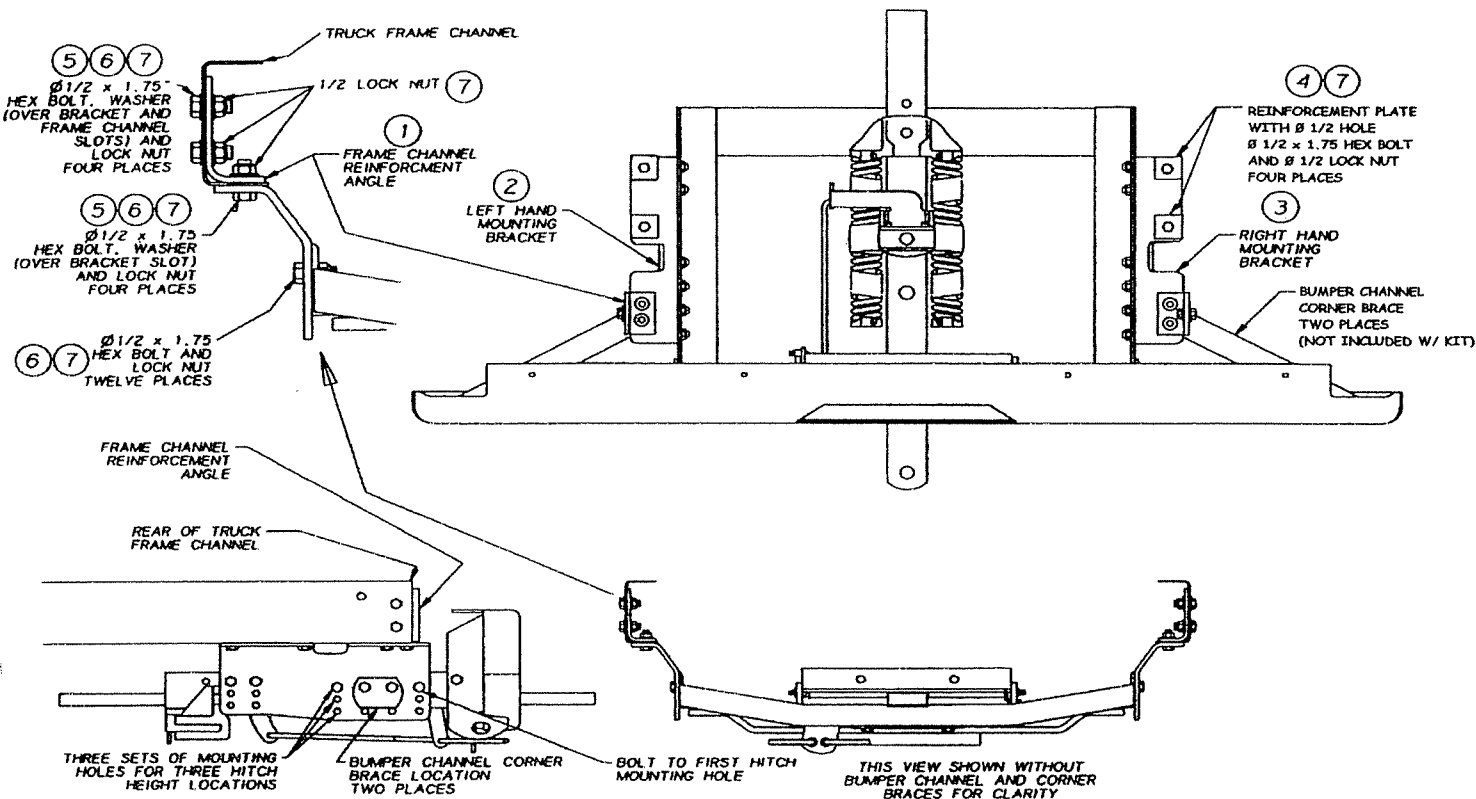
Follow instructions below and refer to assembly drawings and instruction in the **Quic-Cush'nII** Owner's Manual.

1. Remove existing bumper, bumper brackets, and spare tire.
NOTE: Do not remove any welded or riveted-in cross members or brackets.
2. Identify left hand and right hand mounting brackets per diagram on side "B".
3. Bolt mounting brackets to underside of truck frame with frame channel reinforcement angles and backup plates inside the frame as shown. Use $\frac{1}{2}$ " X 1 $\frac{3}{4}$ " hex bolts and washers over bracket slot or channel slots. Secure with $\frac{1}{2}$ " hex nuts to mount. **Do not tighten at this time.**
4. There are three sets of mounting holes in the **Quic-Cush'nII** brackets that will place the towbar at various heights from the ground. Proper towbar heights is 17" – 20" from the ground to the top of the towbar. By design the top of the towbar is in line with the mounting holes in the brackets. Therefore, measure from the ground to the desired mounting holes, and bolt bumper frame to this location.
Note: On some trucks with heavy duty suspensions, the towbar will be higher than 20" , so mount bumper in the lowest hole on these units.

Loosely install **Quic-Cush'n** frame assembly between mounting brackets using the proper holes described in step#4 above and as shown in figure on side"B". Install $\frac{1}{2}$ " bolts in both brackets and front and rear holes in rear brackets.

NOTE: If you are mounting an earlier version **Quic-Cush'nII** frame assembly to this mounting kit, an internal mounting hole may be not present in the **Quic-Cush'nII** frame assembly. If this is the case, drill the additional mounting hole into the **Quic-Cush'nII** frame assembly.

6. Loosely install left and right hand diagonal braces to brackets as shown below with $\frac{1}{2}$ " bolts each side.
NOTE: The diagonal brace will always attach to the center two holes on the brackets as shown on side"B".
7. Install drop center channel to frame assembly with four $\frac{1}{2}$ " bolts. Be careful not to scratch the paint on the truck. Bolt diagonal braces on the bumper channel with the four $\frac{1}{2}$ " bolts.
NOTE: If optional valance panel is to be used, loosely attach it to the channel before installing channel. (Valance panel can only be used when **Quic-Cush'nII** frame assembly is in bottom or middle set of holes.)
8. Torque all bolts. Torque $\frac{1}{2}$ " bolts to 85 ft-lbs.
9. **IMPORTANT:** When complete, check for proper clearances between truck components and **Quic-Cush'nII** bumper assembly. There must be a minimum of 2 $\frac{1}{4}$ " clearance between the forward end of the towbar and truck components with the towbar in the towing or stowed position. A minimum clearance of 1 $\frac{1}{4}$ " must be maintained above the spring loaded towbar locking pin.
10. Grease both ends of roller and make certain it rotates freely.



Ref.	Part Number	Qty.	Description
	47073090		QC 2500 HD SB 2001 Chevy Kit
1	47077583	1	QC 2500 HD SB right hand bracket
	47077584	1	QC 2500 HD SB left hand bracket
4	47077507	4	Plate, reinforce 1/2" bolt
5	NSI	20	1/2" USS flat washer (17008001)
6	16008075	20	1/2" X 1 3/4" Hex bolt, gd.5
7	14110801	20	1/2" NC Stover lock nut

NSI – not a service item